

The NZ Genealogist Society have organised a Family History Open Day on Saturday 22 August.

“Whether you are experienced or just beginning your family history journey, there will be something at our Wellington Family History Month Open Day for you.”

Venue: The Hutt Bowling Club, 6 Myrtle Street, Lower Hutt.

Time: 10.00am to 4.00pm

Entry: \$5:00

Details: <http://tinyurl.com/fhm2015>

**Need help with resource consent applications or submissions?**

Contact Jenny on 029-200-3057 or email [jenny.k.grimmitt@gmail.com](mailto:jenny.k.grimmitt@gmail.com)

[www.downtoearthplanning.nz](http://www.downtoearthplanning.nz)



**Down to Earth Planning**  
SIMPLIFYING YOUR CONSENT PROCESSES

**Maungaraki OSCAR**

**Before and After School Care**

Heather - 0211331608

[www.maungaraki-oscar.co.nz](http://www.maungaraki-oscar.co.nz)

[info@maungaraki-oscar.co.nz](mailto:info@maungaraki-oscar.co.nz)

**A Special Offer if you are thinking of selling this side of Christmas!**

- **FREE** professional photos
- **FREE** pictorial sign on your property
- But wait there's more...  
Phone us for a chat and find out!



**Cheryl Salt & Chrissy Kibblewhite** Licensed Real Estate Salespeople  
**Cheryl:** 569 0768 | **Chrissy:** 619 1042 | **E:** [saltteam@redcoats.co.nz](mailto:saltteam@redcoats.co.nz)



Word of the month:  
**Effulgent**

- A. Shining forth brilliantly; radiant.
- B. Emitting large quantities of dirt
- C. Very wordy; containing a lot of prose
- D. Fulsome praise

# NORMANDALE TIMES

Published by the Normandale Residents' Association



August 2015

## Passing the baton

After a hiatus of almost two years (at least by my records) I have returned to the editorial role for the Normandale Residents Association. There have been a great deal of things happening in and around this little community, so it's entirely possible there is something we might have missed in a given month. If so, be sure to let us know by sending us an email, or contacting us through our site; both of these links are down below.

### Moving Forward:

What would you like to see your committee do? Do you have any spot fixes or pressing issues about the community that you think should be brought to our attention or dealt with in some way.

How would you prefer to communicate with us?

It may be that reading reports from us just isn't enough anymore. We are working to open up other methods of dialogue, but we'd love to hear your suggestions.

Do you have any stories about our local community?

Its always amazing and surprising to see just how many people have stories about others in the community helping each other out. If you have something you would like published, a story that happened to you or someone you know that you think is note worthy, send it in! I would be delighted to include it in an upcoming issue.

—Paul Caygill, returning Editor

**Waglands**  
— DOGS' HOLIDAY RETREAT AND GROOMING SERVICES —  
NORMANDALE ROAD, BELMONT  
[WWW.WAGLANDS.CO.NZ](http://WWW.WAGLANDS.CO.NZ)

SEE INSIDE FOR DETAILS ABOUT INORGANIC RUBBISH COLLECTION

President: Peter Matcham 04 565 1083  
 Editor: Paul Caygill  
 Website: [www.normandale.org.nz](http://www.normandale.org.nz)  
 Email: [ntimes@hotmail.com](mailto:ntimes@hotmail.com)

The next NRA meeting will be held on Wednesday 21st of August- all association members welcome. The meetings last from 7:30 till 9:00.

Disclaimer: The opinions expressed in this paper do not necessarily reflect those of the committee.

Note: Copy deadline 25th of preceding month.

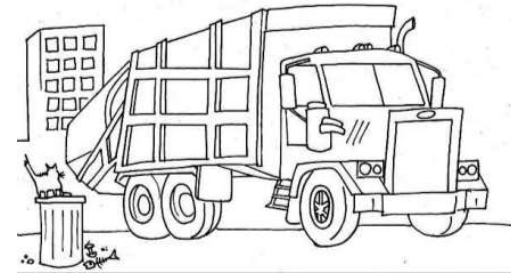


The Normandale School Kapa haka group performed for the first time at Polyfest on Tuesday 23<sup>rd</sup> June 2015. The group of 32 Normandale students from Year 3 to Year 6 performed four songs, a chant and a haka. They looked fantastic and did an amazing job – staff and whanau were all really proud.

Normandale School celebrated Matariki with an evening display of students artwork, singing and a Kapa haka performance. The wonderful artwork was up on show in our new classrooms (Room 5 and Room 6). **These classrooms will really come in handy with Normandale School's increasing student roll.**



Date now confirmed to be 15th of August



- \*No garden or household refuse
- \*No recyclable material
- \*No hazardous material including medical waste
- \*No commercial or excessive quantities of building and other waste.
- \*No tyres or glass
- \*No paint (water or oil based)

Anything that is too heavy for two people to lift will not be collected unless someone provides extra assistance

For volunteers: meet at 145 Normandale Road at 8:45. There will be a free lunch and you get to keep anything that you want. We need ten volunteers and some spaces have already gone.



- + your local landscapers
- + all landscape works carried out
- + from concept to completion

Blair 021 586385  
[elements.landscape@xtra.co.nz](mailto:elements.landscape@xtra.co.nz)



**Based in the Maungaraki shops, we offer weights, pilates and yoga, nutrition plans, massage, personal training . . .**

**Nikki and Reno are committed to your success, if you are then contact us on 586 4881 or [info@o2exercise.co.nz](mailto:info@o2exercise.co.nz)**

**No Job Too Small !  
 Cutting Edge**

Lawns, light landscaping, hedges, pruning, trimming

**Owner Operator  
 James Selwood,  
 Normandale resident  
 Contact  
 589 4717  
 or  
 0274 576 259**

