

NORMANDALE TIMES

Published by the Normandale Residents' Association

DECEMBER 2023



Santa's 40 visit milestone in Normandale

Santa and his helpers will celebrate a huge local milestone this Christmas Day.

It will be the 40th time he has returned to Normandale just to visit our streets and spread his special brand of joy to residents of all ages.

The parade is a highlight of the local calendar since it began on Christmas Day 1984 under the auspices of the residents' association.

Santa's parade begins at 10am on the corner of Poto Road and Stratton Street. The route is Stratton Street, Cottle Park Drive, down Normandale Road, Poto Road, Pokohiwi Road, Eastview Grove, Pekanga Road, Taka Grove, Christina Grove, up Normandale Road, Poto Road to Wilson and Martin Groves, down Miromiro Road and up Normandale Road to finish at Pekanga Road soon after 11am.

A car with a siren will herald Santa's approach.

Santa will deliver presents while his helpers throw sweets donated by the Normandale Residents' Association to those waiting near their mailboxes to greet him.

*Happy
Holidays
Normandale!*



Do you want your presents to be hand delivered by Santa this year?

If you would like Santa to deliver a present or want more information about the event, phone Rosemary on 586 4180.

Please have presents to her by Monday 18th December.

President: Pete Matcham Editor: Victoria Hunt

Website: www.normandale.org.nz

Get in touch: normandale.residents@gmail.com

Disclaimer: The opinions expressed in this paper do not necessarily reflect those of the committee. ***Note:** Copy deadline is the 25th of preceding month.

Next NRA meeting:
15th February 2024
7:30pm at St Aidan's on
the Hill. All association
members welcome.

Normandale paths, tracks, and shortcuts

Close to 154 Normandale Rd and also close to a small off-road car parking area is a sign indicating the start of a walkway, which connects to the suburb of Harbourview. (see across).

The walkway traverses Drapers Reserve (see bottom left) and exits at the corner of Harbourview Drive and Panorama Grove, close to a bus stop (see bottom right).

It will take you about ten minutes to walk through and includes a well formed bush track and some steps. It is mostly surrounded by native bush and well worth a stroll.



COMMUNITY EVENT UPCOMING! CHECK IT OUT BELOW



Normandale Playcentre

**Movie
Fundraiser event**

Next Goal Wins

A Taika Waititi film

Monday 11th Dec, 8.30pm

Arrival from 7.30pm | Tickets \$20

**JOIN US FOR SUPPER, RAFFLES,
& SPOT PRIZES**

Purchase tickets from Gemma
normandaleptreasurer@gmail.com
027 658 8395



**GET SEEN
BY MORE
EYES!**

ADVERTISING AVAILABLE
Get in touch at ntimes@hotmail.com



Quiz

Word of the Month:

Selcouth

- A. ugly
- B. slimy
- C. type of sand
- D. unusual

Last month's word:

Frisson

- A. thrill

BIRD OF THE YEAR 2023

The winner of Forest and Bird's 'Bird of the Century 2023' contest is the pūteketēke, or the Australasian crested grebe. Beating out previous winners like the North Island brown kiwi, kākāpō, and the kea, the pūteketēke's 'Bird of the Century' title marks Forest and Bird's centennial.

Usually seen on the southern lakes of New Zealand, the pūteketēke is known for its distinctive black double crest and bright chestnut and black cheek frills, which it uses in its unique mating displays.



They are also unique in the way they carry their young – on their back when they are swimming. The pūteketēke's win was backed by a significant campaign and publicity stunt from British-American comedian John Oliver who drew international coverage to the contest.

A KIWIANA CHRISTMAS

Find the names of some of things you would see this holiday season.

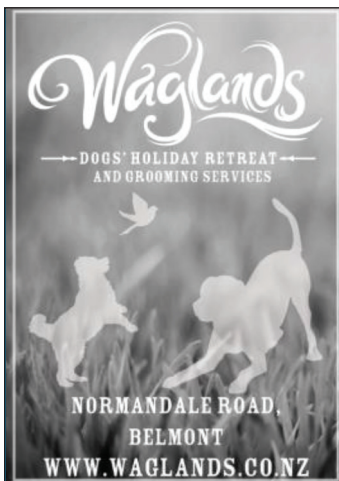
U K A T E D A R A P A T N A S
Q C I Z B K C R I C K E T J T
E N S W L I M G E T U X B S H
B E E C I E S X O B V C Y G G
A W A W K F U H O P M Q I E I
R Y Z I B A R B E C U E T H L
B E C N E D P U O M L Z C Q S
S A X N Q A N R I S U M M E R
L R G E V J P S T T A Y H D D
A S V L M K Q N Y Z W C K E X
D E O Y I H E S W B A L C Z D
N V A G N S L R B E P E V F A
A E W D E F O C B K M X D G E
J U A R P C A P M B W Y E N R
G C P B E R Y A D G N I X O B
I A W H O L I D A Y S Z A P R
N D Z L I V T M F T D S T V E
G E S M W B I D H I A U N X G
B H A R S N G Q N R E M U H N
W F H P C H R I S T M A S F I
E B D E M B E R N W Y C L J G
A G P O H U T U K A W A Q U S
D I B F S E N A C Y D N A C D

- CAROLS
- LIGHTS
- CHRISTMAS
- SUMMER
- KIWIFRUIT
- BOXING DAY
- SLEIGH
- CRICKET
- PAVLOVA
- FAMILY
- JANDALS
- SANTA PARADE
- GINGERBREAD
- PRESENTS
- DECEMBER
- CANDY CANES
- BEACHES
- NEW YEARS EVE
- HOLIDAYS
- BARBECUE
- POHUTUKAWA



Based in the Maungaraki Shops.
We offer Memberships,
Weights, Pilates, Yoga, Golden
Years Classes, Nutrition
Guidance, Personal Training
and Massage.

Toni is committed to your
success, and welcomes you to
join us. Ph:586 4881,
info@o2exercise.co.nz,
www.o2exercise.co.nz



Clear View Treecare

- Free quotes
- Tree trimming
- Hedge trimming
- Stump grinding
- Lawn mowing

"Your one stop
property
maintenance
specialist"

0274 440 339
clearviewarborists@gmail.com

Official Sponsor of the Normandale Times- CK&Co.

MERRY
Christmas
& A HAPPY NEW YEAR

I will be available over the holiday period. So please do not hesitate to contact me.
Chrissy Kibblewhite | 021 244 6784 | chrissy@ckandco.nz